

7.0 APPENDICIES

A	Contacts	63
B	Woodland Management Plan 2022-2032	64
C	Berrygrove Wood Four Year Ride Management Map	85
D	Species Records	87
E	Butterfly Records	99
F	Historic Environment Record	100

A CONTACTS

Countryside Management Service

Farnham House,
Six Hills Way,
Stevenage, SG1
2ST

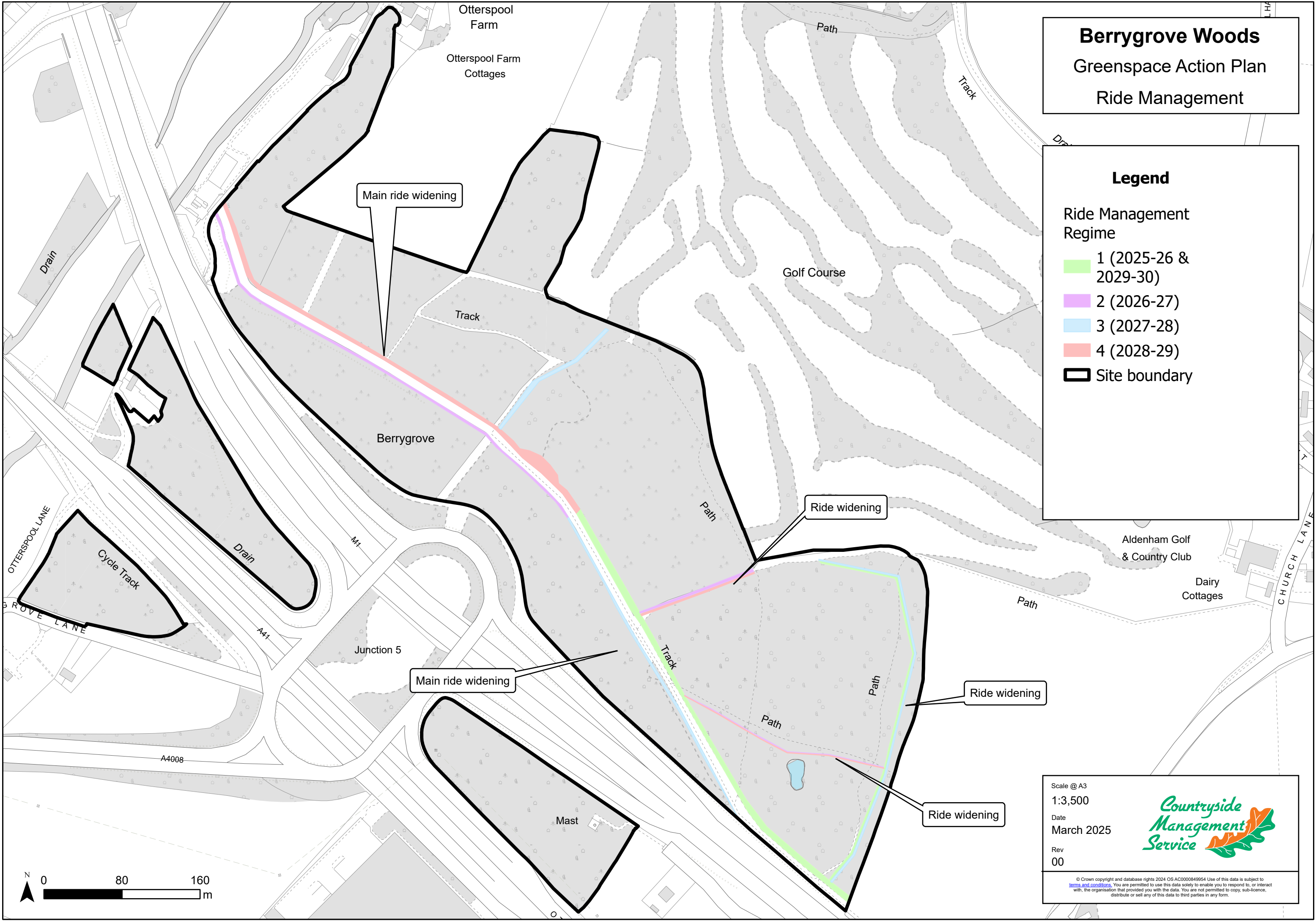
Lee Tyson
t: 01992 588433
e: cms@hertfordshire.gov.uk

HCC Rural Estates

2nd Floor,
Robertson House,
Stevenage, SG1
2ST

Serena Aston
t. 01992 556240
e. Serena.Aston@hertfordshire.gov.uk

C BERRYGROVE WOOD FOUR YEAR RIDE MANAGEMENT MAP



Berrygrove Woods

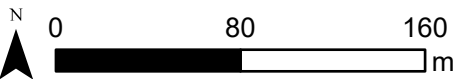
Greenspace Action Plan

Ride Management

Legend

Ride Management Regime

- 1 (2025-26 & 2029-30)
- 2 (2026-27)
- 3 (2027-28)
- 4 (2028-29)
- Site boundary



Scale @ A3
1:3,500
Date
March 2025
Rev
00

Countryside Management Service

© Crown copyright and database rights 2024 OS AC0000849954 Use of this data is subject to [terms and conditions](#). You are permitted to use this data solely to enable you to respond to, or interact with, the organisation that provided you with the data. You are not permitted to copy, sub-licence, distribute or sell any of this data to third parties in any form.

E BUTTERFLY RECORDS 2000-2023

Butterflies of Berrygrove Wood 2000-23

<i>Species</i>	<i>Status in Wood</i>
Brimstone	Established
Brown Argus	Rare
Comma	Established
Essex Skipper	Rare
Gatekeeper	Established
Green-veined White	Established
Holly Blue	Established
Large Skipper	Rare
Large White	Established
Marbled White	Rare
Meadow Brown	Established
Orange-tip	Established
Peacock	Established
Purple Hairstreak	Established
Red Admiral	Established
Ringlet	Rare
Silver-washed Fritillary	Established
Small Skipper	Rare
Small Tortoiseshell	Established
Small White	Established
Speckled Wood	Established
White Admiral	Rare

22 Species recorded in total

Source - Herts & Middx Butterfly Conservation

Moth Records from Berrygrove Wood 2000-23

Catoptria falsella ([Denis & Schiffermüller], 1775)	Green Oak Tortrix
Tortrix viridana Linnaeus, 1758	
Acentria ephemerella ([Denis & Schiffermüller], 1775)	Water Veneer
Agrotis exclamationis (Linnaeus, 1758)	Heart and Dart
Alcis repandata (Linnaeus, 1758)	Mottled Beauty
Euproctis similis (Fuessly, 1775)	Yellow-tail
Cabera exanthemata (Scopoli, 1763)	Common Wave
Bupalus piniaria (Linnaeus, 1758)	Bordered White
Campaea margaritaria (Linnaeus, 1761)	Light Emerald
Sphinx pinastri Linnaeus, 1758	Pine Hawk-moth
Comibaena bajularia ([Denis & Schiffermüller], 1775)	Blotched Emerald
Cosmia trapezina (Linnaeus, 1758)	Dun-bar
	Coxcomb
	Prominent
Ptilodon capucina (Linnaeus, 1758)	
Xestia xanthographa ([Denis & Schiffermüller], 1775)	Square-spot Rustic
Xanthorhoe fluctuata (Linnaeus, 1758)	Garden Carpet

Source - Herts & Middx Moth Group

F HISTORIC ENVIRONMENT RECORD

Historic Environment Record search for Elgan Adlard of HCC C.R.O.W. 04.12.2024

'FISHPOND' in Berry Grove Wood

X,Y coordinates: 513299 198057 Monument Number 1371

Description:

Rectangular embanked fishpond in Berry Grove Wood; 'probably medieval' <1>. The extent has reduced from that shown on the 1871 25" OS map. There is also a mound of earth in the middle of the pond not shown on OS mapping. It is a shallow pond, clay and gravel base, leaf-filled <2>.

Berry Grove has strong signs that at least part of it was once heathland, with probable wood pasture. It is conceivable that it was a medieval deer park; or very early common land<4>.

<1> **Watford & SW Herts Archaeological Society**, 1980, *Supplementary list of field monuments, Aldenham no.35* (Unpublished document). SHT5863.

<2> *Cave-Penny, Helena (HCC) site report, 13.12.85* (Unpublished document). SHT4214.

<3> *OS 25 inch map, 1st edition, 1871* (Cartographic material). SHT8116.

<4> *Information from Trevor James (ex HBRC), 20.9.2001* (Verbal communication). SHT8690.

SITE OF PILLBOX in Berry Grove Wood, beside Ottergrove Lane

X,Y coordinates: 512600 198395 Monument Number 4282

Description:

Wills lists a destroyed concrete pillbox facing N at TQ 126 984 <1>. This would follow the natural line of the Colne river defences. Presumably demolished when the A41 roadway was widened at this point <2>.

<1> Wills, Henry, 1985, *Pillboxes, - p80* (Bibliographic reference). SHT4015.

<2> *Fred Nash (HCC), site visit and photographs, 20.2.1992* (Unpublished document). SHT3718.