

WILDLIFE AND COUNTRYSIDE ACT 1981
The Definitive Map and Statement
of Public Rights of Way in Hertfordshire

Hertfordshire County Council
(Aspenden 02, 05, 11 & Buntingford 44)
Modification Order 2018

This Order is made by Hertfordshire County Council under Section 53(2)(b) of the Wildlife and Countryside Act 1981 ("the Act") because it appears to that authority that the Definitive Map and Statement of Public Rights of Way in Hertfordshire require modification in consequence of the occurrence of an event specified in Section 53(3) (c)(i),(ii) & (iii) of the Act, namely (c) the discovery by the authority of evidence which (when considered with all other relevant evidence available to them) shows:

- (i) that a right of way which is not shown in the map and statement subsists or is reasonably alleged to subsist over land in the area to which the map relates, being a right of way such that the land over which the right subsists is a public path, a restricted byway or, subject to section 54A, a byway open to all traffic
- (ii) that a highway shown in the map and statement as a highway of a particular description ought to be there shown as a highway of a different description
- (iii) that there is no public right of way over land shown in the map and statement as a highway of any description, or any other particulars contained in the map and statement require modification.

The authority has consulted with every local authority whose area includes the land to which the Order relates. Hertfordshire County Council hereby order that:

1. For the purposes of this Order the relevant date is 18th April 2018.
2. The Definitive Map and Statement of Public Rights of Way in Hertfordshire shall be modified as described in Part I and Part II of the Schedule and shown on the plan forming part of this Order ("the Order Plan").
3. This Order shall take effect on the date it is confirmed and may be cited as the Hertfordshire County Council (Aspenden 02, 05, 11 & Buntingford 44) Modification Order 2018.

SCHEDULE
PART I
Modification of Definitive Map

DESCRIPTION OF PATH OR WAY TO BE ADDED

A public bridleway commencing from a junction with Aspenden FP02 at TL 3585 2850 (point D on the Order Plan) then running generally east along the headland for approximately 215 metres crossing the A10 Buntingford Bypass at the

parish boundary at TL 3606 2852 (point E on the Order Plan) continuing generally east through the Watermill Industrial Estate for approximately 260 metres to join the Aspenden Road (public highway) at TL 3632 2854 (point G on the Order Plan).

Width: 4 metres between TL 3585 2850 (point D on the Order Plan) and TL 3619 2853 (point F on the Order Plan)
4 feet (1.2m) between TL 3619 2853 (point F on the Order Plan) to TL 3632 2854 (point G on the Order Plan)

Limitations: None

DESCRIPTION OF PUBLIC RIGHT OF WAY TO BE UPGRADED

Part of Aspenden Footpath 02 to be upgraded to a public bridleway commencing from School Lane (public highway) at TL 3563 2831 (point A on the Order Plan) then generally north between high banks for approximately 120 metres to TL 3564 2843 (point B on the Order Plan) continuing generally east north east for approximately 180 metres into a field at TL 3580 2849 (point C on the Order Plan) and continuing for approximately 45 metres along the headland on the south side of the boundary to a junction with a bridleway at TL 3585 2850 (point D on the Order Plan).

Width: Varies between 4 metres and 14 metres between TL 3563 2831 (point A on the Order Plan) to TL 3580 2849 (point C on the Order Plan) as shown excluded from hereditaments on the 1910 Finance Act map and shown shaded grey on the Order Plan.
4 metres between TL 3580 2849 (point C on the Order Plan) to TL 3585 2850 (point D on the Order Plan)

Limitations: None

Aspenden Footpath 05 to be upgraded to a public bridleway commencing from the north point of Aspenden Recreation Ground at a junction with the Aspenden Road (public highway) at TL 3627 2840 (point X on the Order Plan) then running along the line of Aspenden Footpath 05 along the west side of the eastern boundary of the Recreation Ground generally south south east for approximately 220 metres crossing The Bourne to a junction with the public road from Aspenden to Westmill at TL 3633 2819 (point Y on the Order Plan).

Width: 4 feet (1.2m)

Limitations: None

35600 35700 35800 35900 36000 36100 36200 36300 36400 36500

This Plan forms part of the Hertfordshire County Council (Aspenden 02, 05, 11 & Buntingford 44) Modification Order 2018

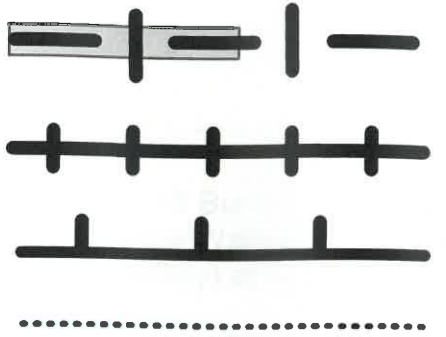
Footpath upgraded to bridleway/bridleway to be added

Existing bridleway

Existing footpath

Parish boundary

Appears on DM sheet No. 24



Buntingford

Watermill Industrial Estate

Sewage Works

BR 44

Civic Amenities Site

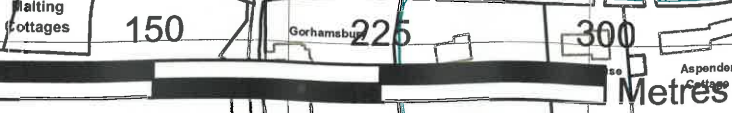
Aspenden Bridge

River Rib

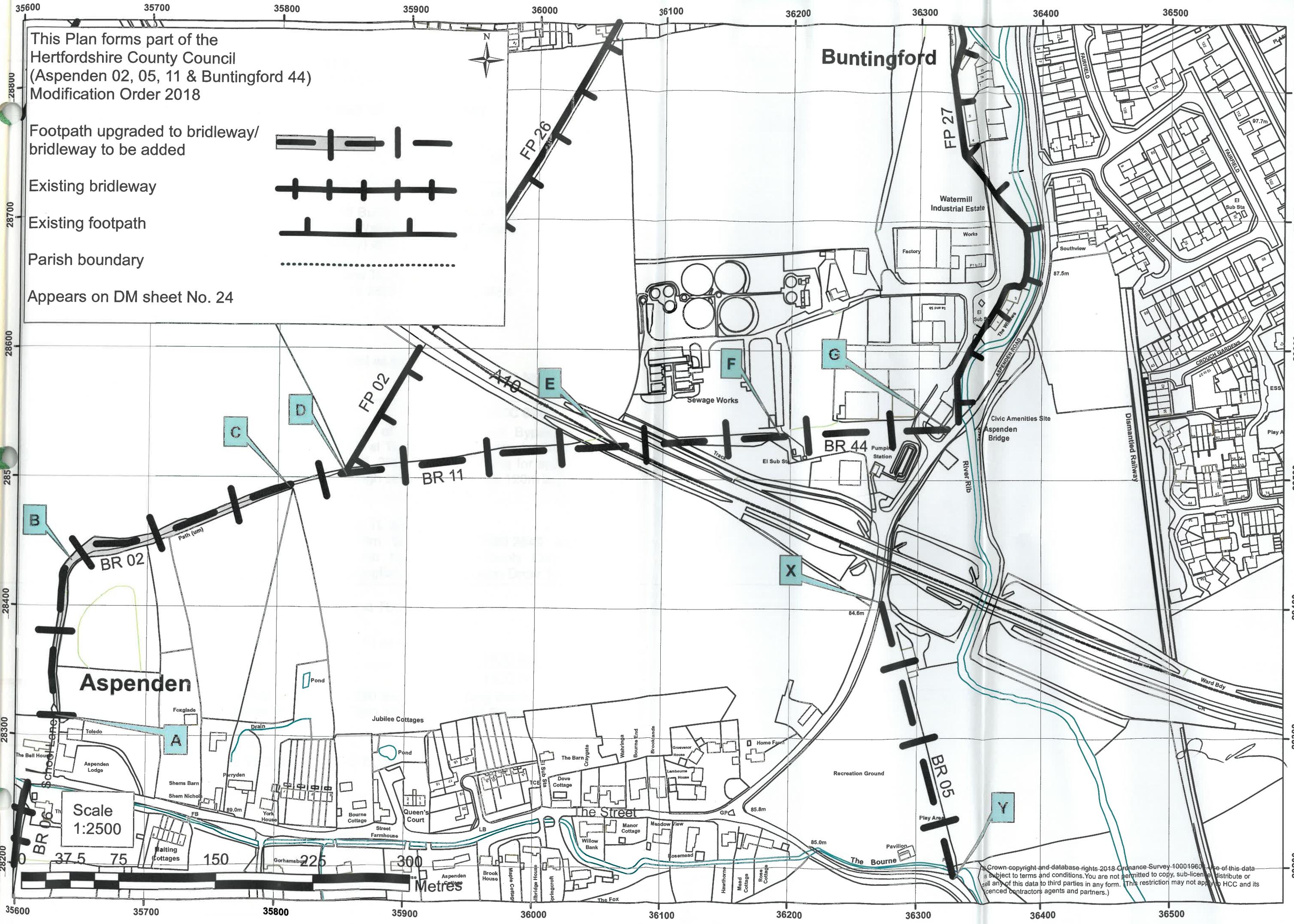
Dismantled Railway

Aspenden

Scale 1:2500



© Crown copyright and database rights 2018 Ordnance Survey 10001960. Use of this data is subject to terms and conditions. You are not permitted to copy, sub-license, distribute or sell any of this data to third parties in any form. This restriction may not apply to HCC and its licensed contractors agents and partners.



PART II
Modification of Definitive Statement

VARIATION OF PARTICULARS OF PATH OR WAY

A new Statement shall be recorded for Buntingford 44 as follows:

Path No	Status	HCC Map Ref
044	BR	HCC 024
Commences from Aspenden BR11 on the A10 Buntingford Bypass at TL 3606 2852 then running E across the A10 and through the Watermill Industrial Estate for approx 260m to join the Aspenden Road (public highway) at TL 3632 2854.		
Width	4m between TL 3606 2852 and TL 3619 2853 4 feet (1.2m) between TL 3619 2853 and TL 3632 2854	
Limitations	None	

The Statement for Aspenden 02 shall be amended as follows:

Path No	Status	HCC Map Ref
002	FP & BR	HCC 024
Chilly Hills. Commences as a FP at SW side of A10 Buntingford Bypass at TL 3591 2860 thence SW to a junction with BR11 at TL 3585 2850, continuing WSW as a BR for approx 45m along the headland to TL 3580 2849 continuing for approx 180m to TL 3564 2843 then continuing between high banks S for approx 120m to join School Lane public highway at TL 3563 2831.		
Width	4m between TL 3585 2850 and TL 3580 2849 Varies between 4m and 14m between TL 3580 2849 and TL 3563 2831 as shown in the Hertfordshire County Council (Aspenden 02, 05, 11 and Buntingford 44) Modification Order 2018	
Limitations	None between TL 3585 2850 and TL 3563 2831	

A new Statement shall be recorded for Aspenden 11 as follows:

Path No	Status	HCC Map Ref
011	BR	HCC 024
Commences from Aspenden BR02 at TL 3585 2850 then runs E along the headland on S side of boundary for approx 215m to junction with Buntingford BR44 on A10 Buntingford Bypass at TL 3606 2852.		
Width	4m between TL 3585 2850 and TL 3606 2852	
Limitations	None	

The Statement for Aspenden 05 shall be amended as follows:

Path No

Status

HCC Map Ref

005

BR

HCC 024

Commences from the N point of Aspenden Recreation Ground at a junction with the Aspenden Road (public highway) at TL 3627 2840 then running generally SSE along the W side of the E boundary of the Recreation Ground for approx 220m to cross The Bourne and join the Aspenden-Westmill public road at TL 3633 2819.

Width 4 feet (1.2m)

Limitations None

IN WITNESS whereof the COMMON SEAL of HERTFORDSHIRE COUNTY COUNCIL was hereunto affixed this 27th day of April 2018

The Common Seal of
HERTFORDSHIRE
COUNTY COUNCIL
was hereunto affixed
in the presence of:-



~~Chief Legal Officer~~



Simon Banks
Assistant
Chief Legal Officer