

NOTICE OF CONFIRMATION OF A DIVERSION ORDER

HIGHWAYS ACT 1980, SECTION 119

HERTFORDSHIRE COUNTY COUNCIL

**HERTFORDSHIRE COUNTY COUNCIL (Stanstead Abbots 22)
DIVERSION ORDER 2016**

On 25 November 2016, Hertfordshire County Council confirmed the above Order made under section 119 of the Highways Act 1980.

The effect of the Order as confirmed is to divert line of the public footpath running between Hunsdon footpath 8 and Hunsdon Road to a line commencing at a junction with Hunsdon footpath 8 at TL 4081 1344 running for approx. 80m in a generally W. direction to the boundary at TL 4073 1344. Then continuing in a generally SW. direction on the E. side of the boundary for approx. 120m to TL 4069 1334. Then continuing in a generally W. direction for approx. 5m to cross from the E to the W side of the boundary at TL 4068 1334. Then continuing in a generally SW. direction for approx. 60m to the S. boundary of the field at TL 4067 1327. Then continuing in a generally WSW. direction for approx. 310m along the N. side of the field boundary to a track at TL 4040 1313. Then continuing along the track in a generally SWS. direction for approx. 50m to TL 4037 1310. Then continuing along the track in a generally SE. direction for approx. 165m to a point on the Stanstead Abbots/Hunsdon parish boundary at TL 4043 1295, and continuing along the track in a generally WSW. direction for approx. 150m to join Stanstead Abbots Footpath 22 at TL 4034 1283.

A copy of the order and the order plan may be seen free of charge at front reception of Hertfordshire County Council, County Hall, Hertford, from 9.00 am to 4.00 pm on Monday to Friday and at East Herts District Council, Wallfields, Pegs Lane, Hertford, SG13 8EQ. Copies of the order and plan may be bought from Hertfordshire County Council at the price of £2.

The Order comes into force as from 15 December 2016, but if any person aggrieved by the Order wants to question its validity, or that of any provision contained in it, on the grounds that it is not within the powers of the Highways Act 1980, as amended, or on the grounds that any requirement of the Act, as amended, or of any regulation made under the Act has not been complied with in relation to the Order, he or she may, under paragraph 2 of Schedule 2 to the Act as applied by paragraph 5 of Schedule 6 to the Act, within 6 weeks from 15 December 2016, make an application to the High Court.

15 December 2016

**PUBLIC PATH DIVERSION ORDER
HIGHWAYS ACT 1980**

HERTFORDSHIRE COUNTY COUNCIL

**HERTFORDSHIRE COUNTY COUNCIL
(STANSTEAD ABBOTTS 22)
DIVERSION ORDER 2016**

This Order is made by Hertfordshire County Council ("the authority") under section 119 of the Highways Act 1980 ("the 1980 Act") because it appears to the authority that in the interests of the owners of the land crossed by the footpath described in paragraph 1 of this Order it is expedient that the line of the path should be diverted.

Mr S Findlay and Mr D Demetriou have agreed to defray any compensation which becomes payable in consequence of the coming into force of this Order and any expenses which are incurred in bringing the new site of the path into a fit condition for use by the public.

East Herts District Council, Stanstead Abbots Parish Council and Hunsdon Parish Council have been consulted as required by section 120(2) of the 1980 Act.

BY THIS ORDER:

1. The public right of way over the land situate at Stanstead Abbots and Hunsdon shown by a bold continuous line on the plan contained in this order ("the Order Plan") and described in Part 1 of the Schedule to this order shall be stopped up on the date on which the authority certifies that the public footpath described in paragraph 3 below is in fit condition for use by the public such date not being earlier than 7 days from the date of confirmation of this Order.
2. Notwithstanding this Order EDF Energy shall have the following rights over the land referred to in paragraph 1, namely:-

All such rights in respect of any apparatus belonging to them on under or over said land as they have hitherto enjoyed.
3. There shall at the end of 7 days from the date of confirmation of this Order be a public footpath over the land situate at Stanstead Abbots and Hunsdon described in Part 2 of the Schedule and shown by a bold broken line on the Order Plan.
4. The rights conferred on the public under this Order shall be subject to the limitations and conditions set out in Part 3 of the Schedule.

SCHEDULE

PART 1 DESCRIPTION OF SITE OF EXISTING PATH OR WAY

The full width of that part of Stanstead Abbots FP22 running from its junction with Hunsdon Footpath 8 at TL 4081 1344 (Point A on the Order Plan) in a generally south westerly direction across fields for 590 metres to a track at TL 4038 1305 (Point X on the Order Plan) and continuing in a generally westerly direction on the north side of Newgate House and then in a southerly direction through the farm for 290 metres to Hunsdon Road (public road) at TL 4035 1281 (Point I on the Order Plan).

PART 2 DESCRIPTION OF SITE OF NEW PATH OR WAY

Public footpath from a junction with Hunsdon footpath 8 at TL 4081 1344 (Point A on the Order Plan) running for approximately 80 metres in a generally westerly direction to the boundary at TL 4073 1344 (Point B on the Order Plan). Then continuing in a generally south westerly direction on the east side of the boundary for approximately 120 metres to TL 4069 1334 (Point C on the Order Plan). Then continuing in a generally westerly direction for approximately 5 metres to cross from the east to the west side of the boundary at TL 4068 1334 (Point D on the Order Plan). Then continuing in a generally south westerly direction for approximately 60 metres to the southern boundary of the field at TL 4067 1327 (Point E on the Order Plan). Then continuing in a generally west south westerly direction for approximately 310 metres along the north side of the field boundary to a track at TL 4040 1313 (Point F on the Order Plan). Then continuing along the track in a generally west south westerly direction for approximately 50 metres to TL 4037 1310 (Point G on the Order Plan). Then continuing along the track in a generally south easterly direction for approximately 165 metres to a point on the Stanstead Abbots/Hunsdon parish boundary at TL 4043 1295 (Point H on the Order Plan), and continuing along the track in a generally west south westerly direction for approximately 150 metres to join Stanstead Abbots Footpath 22 at TL 4034 1283 (Point I on the Order Plan).

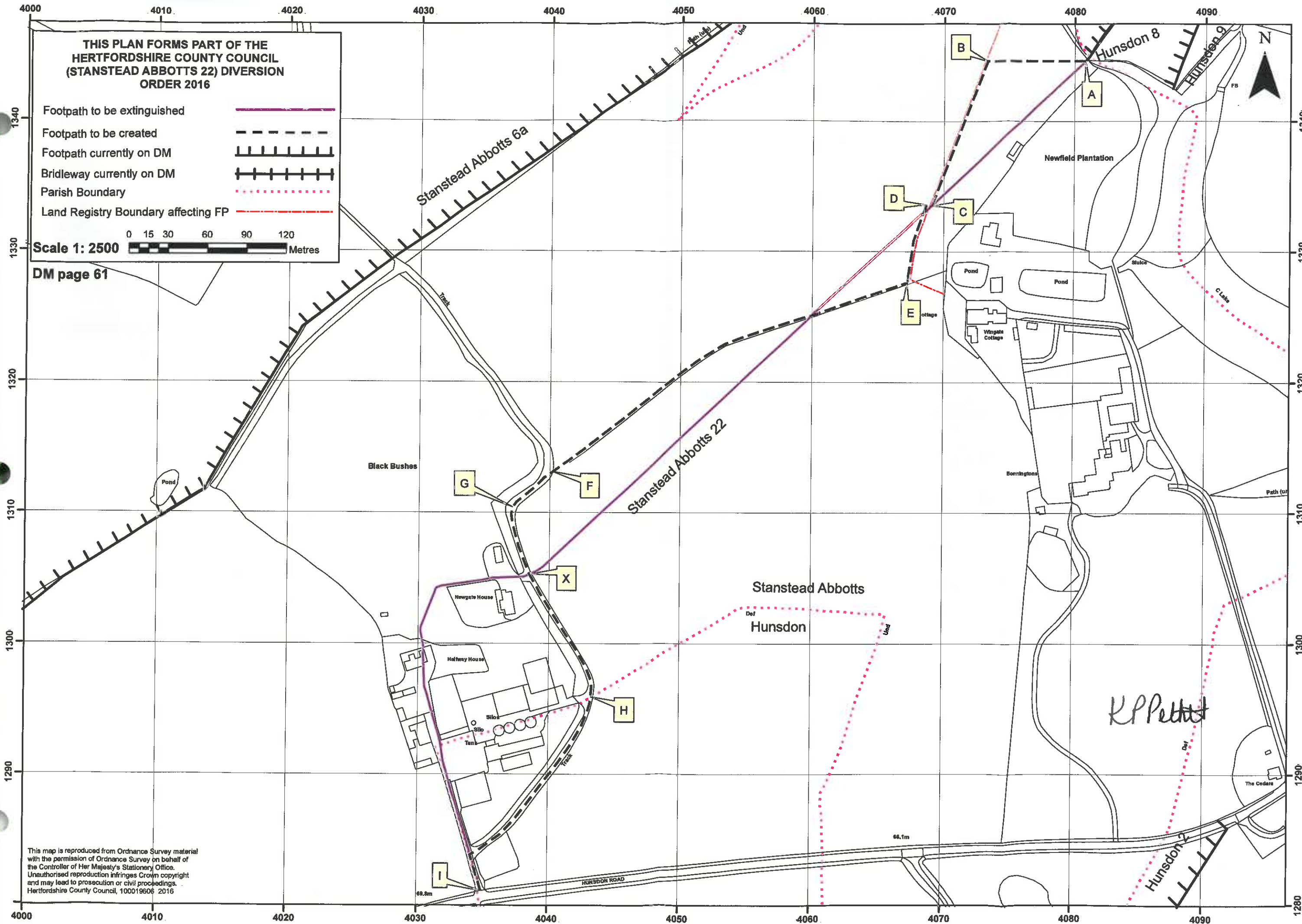
Width: 3 metres between TL 4081 1344 (Point A on the Order Plan) and TL 4040 1313 (Point F on the Order Plan).
6 metres between TL 4040 1313 (Point F on the Order Plan) and TL 4034 1283 (Point I on the Order Plan).

**THIS PLAN FORMS PART OF THE
HERTFORDSHIRE COUNTY COUNCIL
(STANSTEAD ABBOTTS 22) DIVERSION
ORDER 2016**

- Footpath to be extinguished —
- Footpath to be created - - -
- Footpath currently on DM | | | | |
- Bridleway currently on DM + + + + +
- Parish Boundary
- Land Registry Boundary affecting FP - - - - -

Scale 1: 2500 Metres

DM page 61



This map is reproduced from Ordnance Survey material with the permission of Ordnance Survey on behalf of the Controller of Her Majesty's Stationery Office. Unauthorised reproduction infringes Crown copyright and may lead to prosecution or civil proceedings. Hertfordshire County Council, 100019606 2016

**PART 3
LIMITATIONS AND CONDITIONS**

None

IN WITNESS whereof the COMMON SEAL of HERTFORDSHIRE COUNTY COUNCIL was hereunto affixed this 30 day of September 2016

The Common Seal of
HERTFORDSHIRE
COUNTY COUNCIL
was hereunto affixed
in the presence of:-


Kathryn Pettitt

Chief Legal Officer



The foregoing Order is
hereby confirmed

Chief Legal Officer

Dated



.....

25 November 2016