

NOTICE OF MAKING PUBLIC PATH CREATION AGREEMENT

HIGHWAYS ACT 1980 SECTION 25

The Napsbury Fields Public Path Creation Agreement 2013

St. Albans

The above named Agreement, made on 28th March 2013 under section 25 of the Highways Act 1980, has the effect of creating four public footpaths on Napsbury Fields, St. Albans, as shown on the attached plan.

A Footpath commencing from a junction with St Albans City Bridleway 058 (Herons Way) at TL 1647 0539 (Point A on the Plan) heading in a generally southerly direction for approximately 40m to TL 1647 0535 (Point B on the Plan). Continuing in a generally south easterly direction for approximately 120m to TL 1656 0527 (Point C on the Plan). Continuing in a generally south easterly direction for approximately 240m to TL 1670 0510 (Point D on the Plan) then turning generally south west and continuing for approximately 175m to TL 1659 0496 (Point E on the Plan). Continuing in a generally southerly direction for approximately 90m to a junction with Napsbury Lane at TL 1658 0488 (Point F on the Plan).

A Footpath commencing at TL 1647 0535 (Point B on the Plan) heading in a generally south westerly direction for approximately 310m to TL 1626 0514 (Point G on the Plan). Continuing in a generally south easterly direction for approximately 390m to TL 1659 0496 (Point E on the Plan).

A Footpath commencing at TL 1656 0527 (Point C on the Plan) heading in a generally north easterly direction for approximately 20m to a junction with The Firs at TL 1657 0528 (Point I on the Plan).

A Footpath commencing at TL 1626 0514 (Point G on the Plan) heading in a generally north westerly direction for 35m to a junction with St Albans City Bridleway 058 (Herons Way) at TL 1624 0517 (Point H on the Plan).

Width: 2 metres

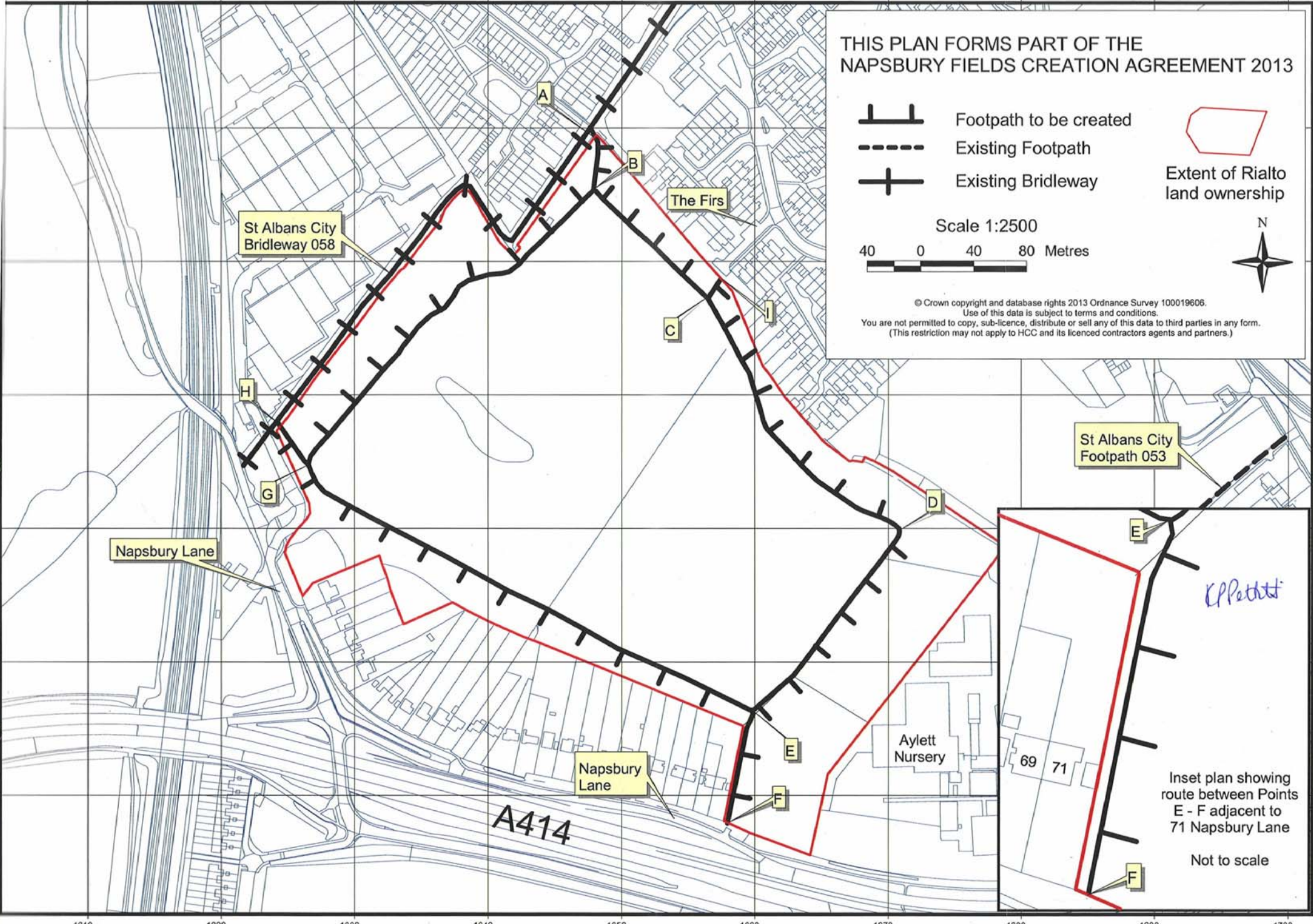
Limitations: None

Under section 25 there is no right of objection and the Agreement has taken immediate effect.

Dated: 12th June 2013

NICHOLAS DULCEN
RIALTO HOMES LIMITED

A-B DIRECTOR INTERNATIONAL
GENERAL ELECTRIC, CUSA



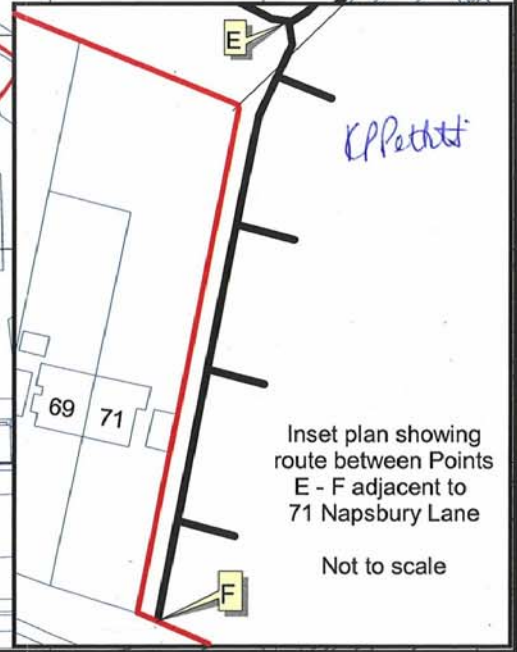
THIS PLAN FORMS PART OF THE
NAPSBURY FIELDS CREATION AGREEMENT 2013

- Footpath to be created
- Existing Footpath
- Existing Bridleway
- Extent of Rialto land ownership

Scale 1:2500



© Crown copyright and database rights 2013 Ordnance Survey 100019606.
Use of this data is subject to terms and conditions.
You are not permitted to copy, sub-licence, distribute or sell any of this data to third parties in any form.
(This restriction may not apply to HCC and its licenced contractors agents and partners.)



1610

1620

1630

1640

1650

1660

1670

1680

1690

1700

1610

1620

1630

1640

1650

1660

1670

1680

1690

1700

0540

0530

0520

0510

0500

0490