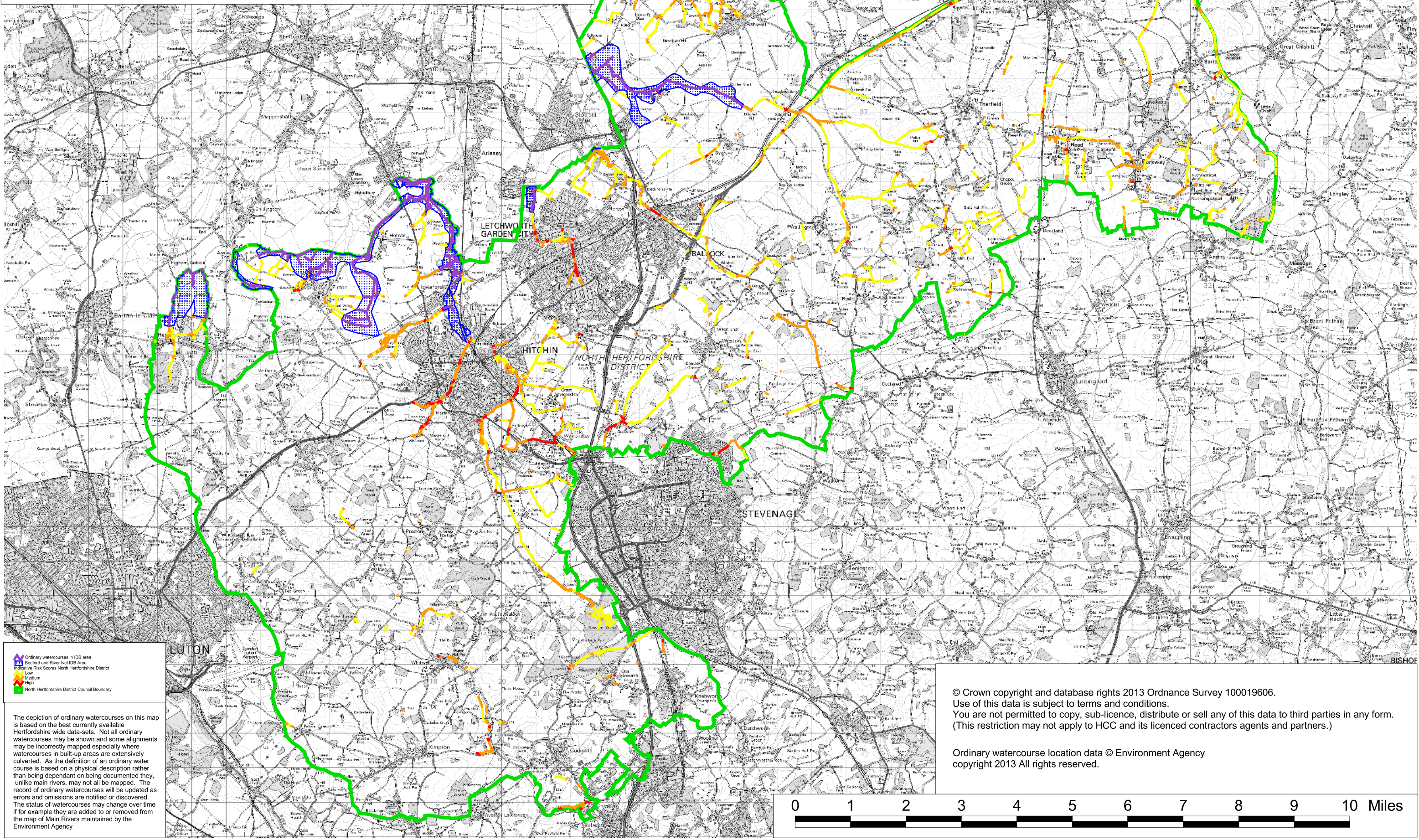


Indicative risk scores for ordinary watercourses linked to the consultation on Hertfordshire County Council draft service standards (Map 5 of 10)



The depiction of ordinary watercourses on this map is based on the best currently available Hertfordshire wide data-sets. Not all ordinary watercourses may be shown and some alignments may be incorrectly mapped especially where watercourses in built-up areas are extensively culverted. As the definition of an ordinary watercourse is based on a physical description rather than being dependant on being documented they, unlike main rivers, may not all be mapped. The record of ordinary watercourses will be updated as errors and omissions are notified or discovered. The status of watercourses may change over time if for example they are added to or removed from the map of Main Rivers maintained by the Environment Agency

© Crown copyright and database rights 2013 Ordnance Survey 100019606. Use of this data is subject to terms and conditions. You are not permitted to copy, sub-licence, distribute or sell any of this data to third parties in any form. (This restriction may not apply to HCC and its licenced contractors agents and partners.)

Ordinary watercourse location data © Environment Agency copyright 2013 All rights reserved.