

# HERTFORD AND WARE URBAN TRANSPORT PLAN

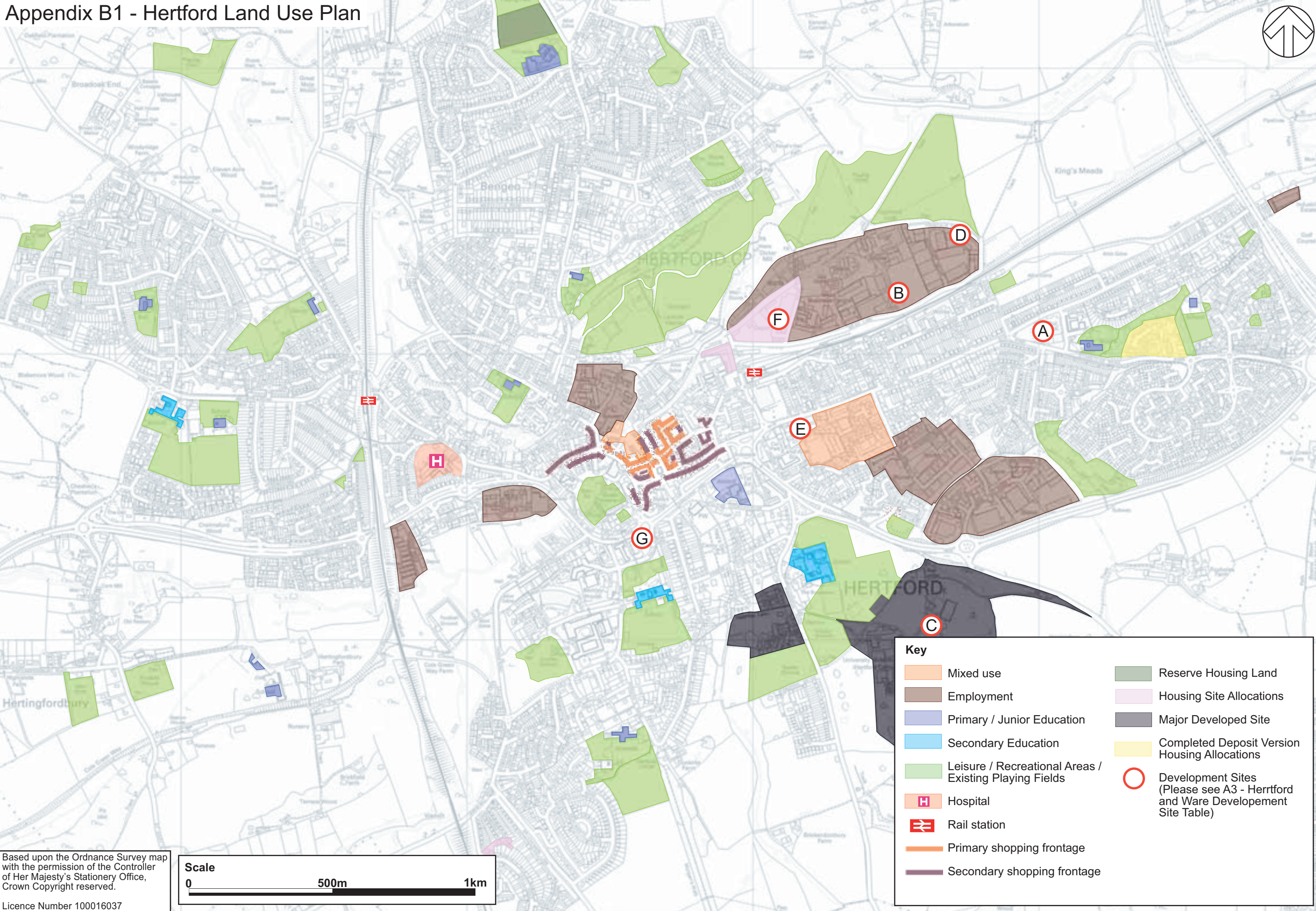
**November 2010**



## Appendix B - Key Issues



Appendix B1 - Hertford Land Use Plan



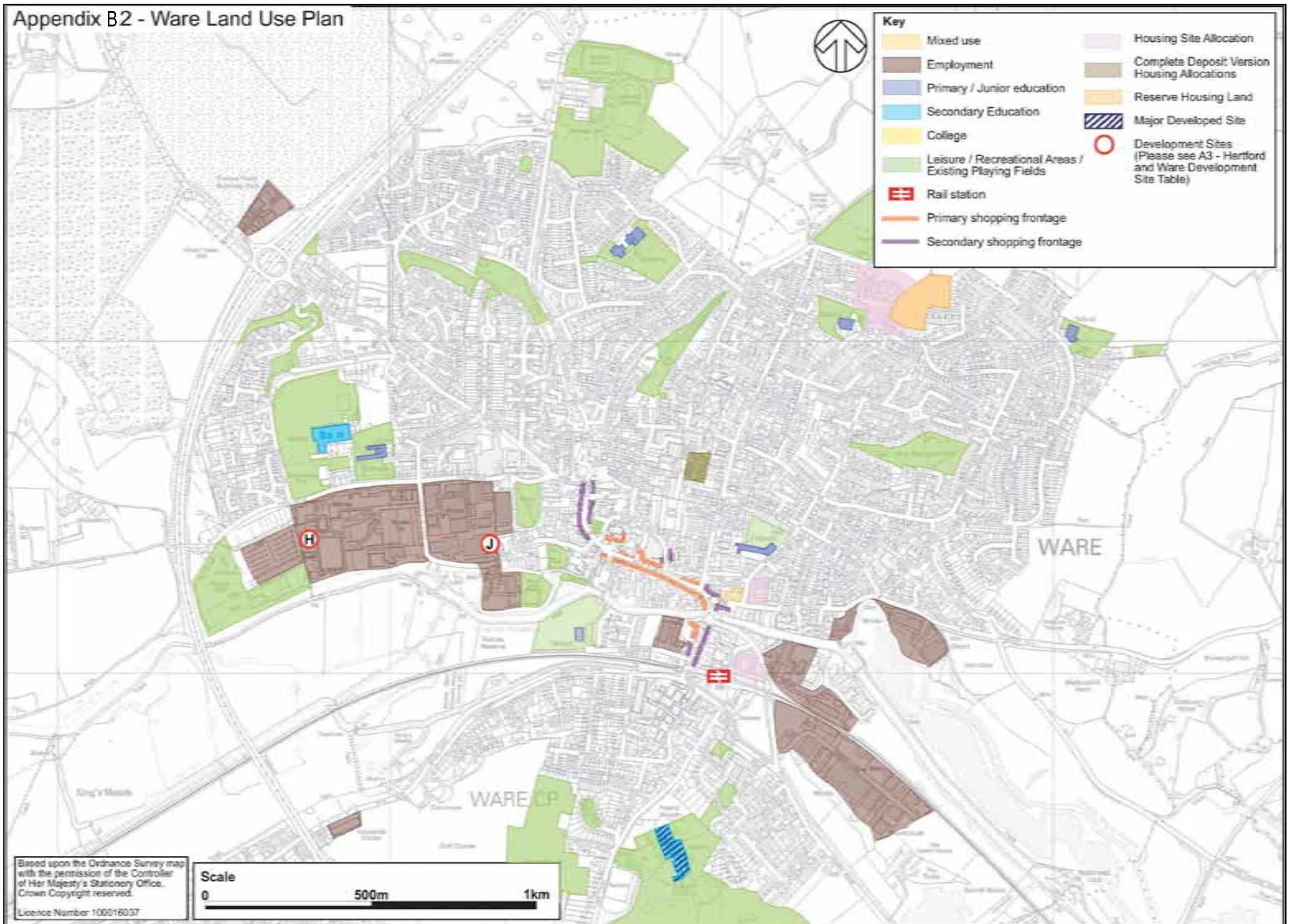
Based upon the Ordnance Survey map with the permission of the Controller of Her Majesty's Stationery Office, Crown Copyright reserved.

Licence Number 100016037





# Appendix B2 - Ware Land Use Plan

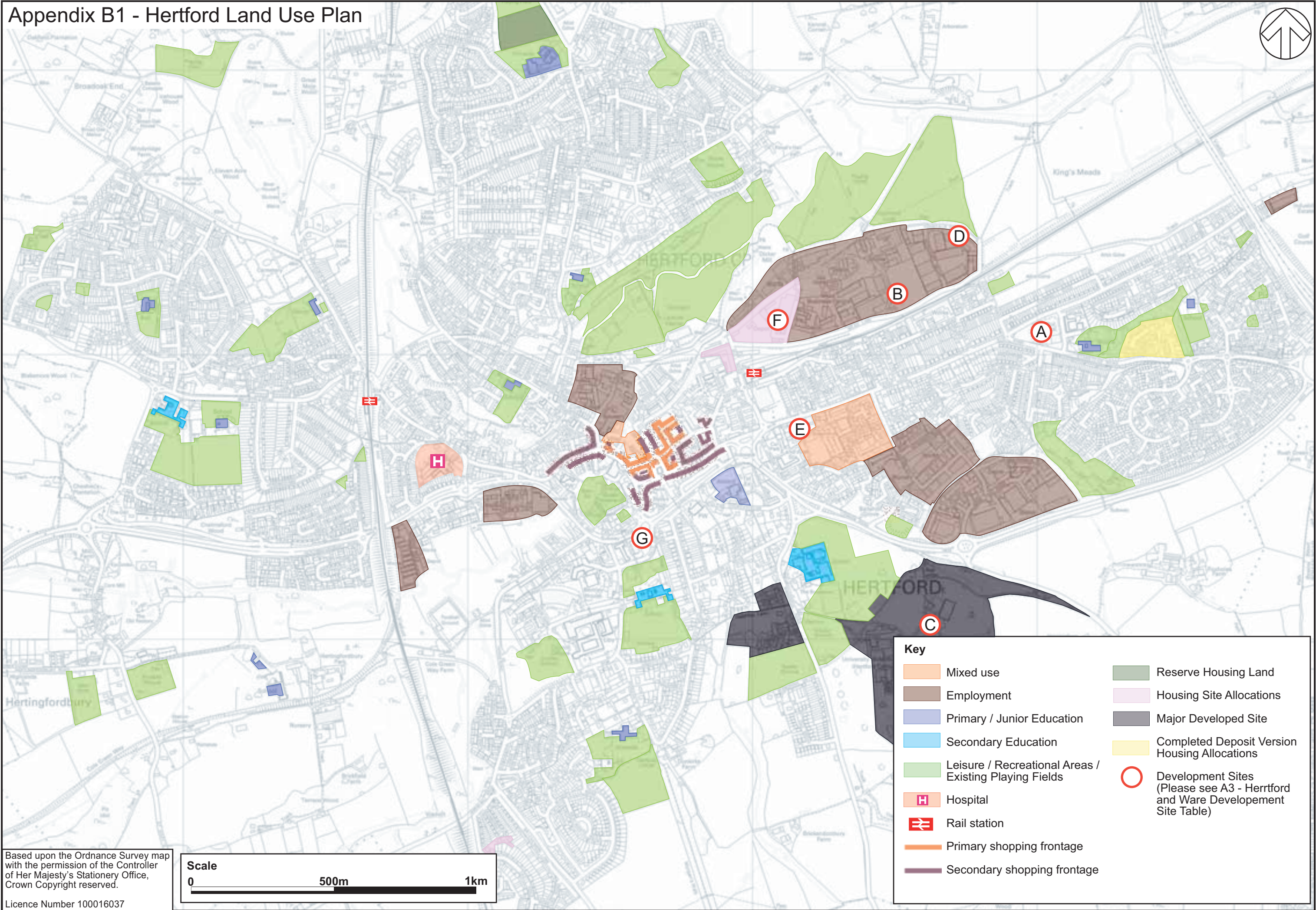


### B3 – Hertford and Ware Development Site Table

Ref No	Name	Type	Description	Status	Town
A (EH/622/2008)	Hertford Police Station, Ware Road	Res Dev 50 units or more	Demolition of existing Hertford Police Station buildings & construction of new mixed use development inc 94 residential flats, 39 houses, 80 bed hotel, 80 bed nursing home, small residential unit and a pct medical centre. together with underground surface and garage parking for 274 cars.	Refused	Hertford
B (EH/475/2008)	Mead Lane	Comm Dev 1000sqm or more.	New business units within use classes B1, B2 & B8	Grant	Hertford
C EH/292/2008	Balls Park, Mangrove Road	Res Dev 50 units or more.	Area A, revised design and internal layout to residential blocks A1-A3 approved under LPA ref: 3/02/2271/FP to provide 72 residential units Also note, conversion of the mansion to 27 apartments and stable block to 12 apartments	Grant	Hertford
D EH/78/2008	Martin House, Unit 7 Fountain Drive	Comm Dev 1000sqm or more	Construction of two storey extension to existing factory unit (approved previously on 3/06/98 - app 3/98/0281/RP) with tensile fabric canopy to existing offices entrance - plus single storey loading bay to north elevation with new secondary vehicular access for small van deliveries	Grant with conditions	Hertford
E EH/621/2007	26 Ware Road	Comm Dev 1000sqm or more.	Demolition of existing buildings and the erection of a ground floor retail unit, 5 no. two bed and 5 no. one bed residential units with underground parking	Grant with conditions	Hertford
F EH/244/2007	Land off Marshgate Drive	Res Dev 50 units or more.	Demolition of existing light industrial buildings & construction of 182 new residential units with covered car parking, new access & external landscaping	Approved	Hertford
G (EH/230/2007)	Solartron House, Hale Road	Comm Dev 1000sqm or more	Change of use of existing office to type 2 Police station including reconfiguration of Parking, erection of new security fencing and new footpath	Approved	Hertford
H (EH/441/2006)	GlaxoSmithKline	Comm Dev 1000sqm or more	Proposed research and development building (B9) external alterations to Building B3, construction of new footpath and associated landscape	Grant with conditions	Ware
J (EH/177/2006)	Land to south of Building U2, Priory Street	Comm dev 1000sqm or more	3 Storey extension to building U2, installation of plant onto roof of building S1	Grant with conditions	Ware



Appendix B1 - Hertford Land Use Plan



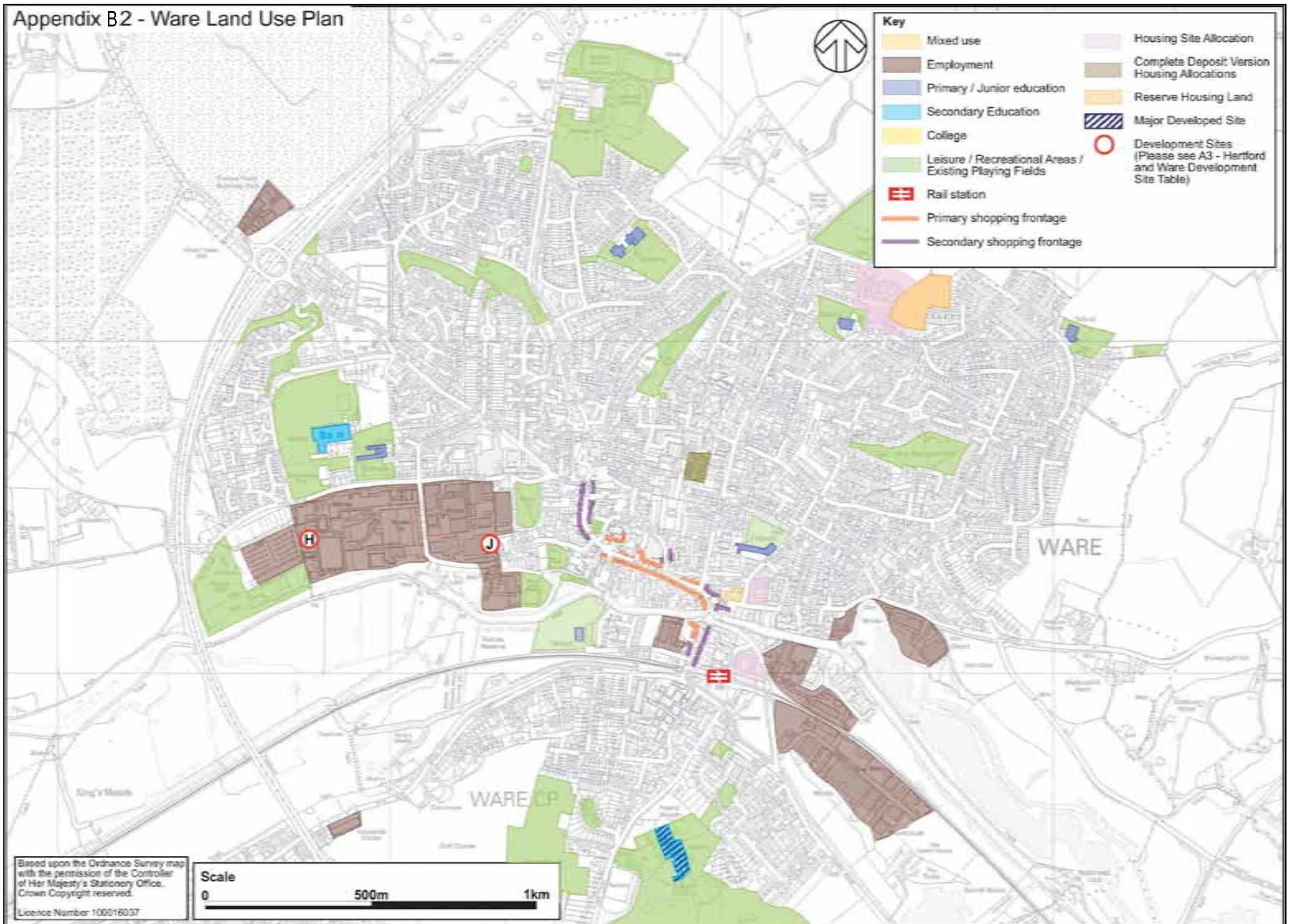
Based upon the Ordnance Survey map with the permission of the Controller of Her Majesty's Stationery Office, Crown Copyright reserved.

Licence Number 100016037

N:\Herts Hertford & Ware Transport Plan 1189\DRAWINGS\FREEHAND\Hertford Land Use Plan.fh11



# Appendix B2 - Ware Land Use Plan



### B3 – Hertford and Ware Development Site Table

Ref No	Name	Type	Description	Status	Town
A (EH/622/2008)	Hertford Police Station, Ware Road	Res Dev 50 units or more	Demolition of existing Hertford Police Station buildings & construction of new mixed use development inc 94 residential flats, 39 houses, 80 bed hotel, 80 bed nursing home, small residential unit and a pct medical centre. together with underground surface and garage parking for 274 cars.	Refused	Hertford
B (EH/475/2008)	Mead Lane	Comm Dev 1000sqm or more.	New business units within use classes B1, B2 & B8	Grant	Hertford
C EH/292/2008	Balls Park, Mangrove Road	Res Dev 50 units or more.	Area A, revised design and internal layout to residential blocks A1-A3 approved under LPA ref: 3/02/2271/FP to provide 72 residential units Also note, conversion of the mansion to 27 apartments and stable block to 12 apartments	Grant	Hertford
D EH/78/2008	Martin House, Unit 7 Fountain Drive	Comm Dev 1000sqm or more	Construction of two storey extension to existing factory unit (approved previously on 3/06/98 - app 3/98/0281/RP) with tensile fabric canopy to existing offices entrance - plus single storey loading bay to north elevation with new secondary vehicular access for small van deliveries	Grant with conditions	Hertford
E EH/621/2007	26 Ware Road	Comm Dev 1000sqm or more.	Demolition of existing buildings and the erection of a ground floor retail unit, 5 no. two bed and 5 no. one bed residential units with underground parking	Grant with conditions	Hertford
F EH/244/2007	Land off Marshgate Drive	Res Dev 50 units or more.	Demolition of existing light industrial buildings & construction of 182 new residential units with covered car parking, new access & external landscaping	Approved	Hertford
G (EH/230/2007)	Solartron House, Hale Road	Comm Dev 1000sqm or more	Change of use of existing office to type 2 Police station including reconfiguration of Parking, erection of new security fencing and new footpath	Approved	Hertford
H (EH/441/2006)	GlaxoSmithKline	Comm Dev 1000sqm or more	Proposed research and development building (B9) external alterations to Building B3, construction of new footpath and associated landscape	Grant with conditions	Ware
J (EH/177/2006)	Land to south of Building U2, Priory Street	Comm dev 1000sqm or more	3 Storey extension to building U2, installation of plant onto roof of building S1	Grant with conditions	Ware







## Hertfordshire County Council - making Hertfordshire an even better place to live by providing:

Care for older people

Support for schools, pre-school children, pupils and parents

Support for carers

Fire and rescue

Fostering and adoption

Support for people with disabilities

Libraries

Admission to schools

Road maintenance and safety

Services to safeguard and promote the welfare of children and adults

Trading standards and consumer protection

Household waste recycling centres

These are only some of our services.

Find out more at [www.hertsdirect.org](http://www.hertsdirect.org)

or email us at [hertsdirect@hertscc.gov.uk](mailto:hertsdirect@hertscc.gov.uk)

Every Hertfordshire library has internet access  
for the public