

Our Partnership Ambition for Children, Young People and Families with SEND

We are hugely ambitious for children and young people in Hertfordshire with SEND. In the development of the SEND Strategy 2022-2025 we defined five ambitions that are vital to improving outcomes for all children and young people with SEND in Hertfordshire.

These ambitions are integral to this improvement plan and have been a key part of the design work across the partnership that underpins it. The ambitions provide a golden thread through all that we do from a strategic to an operational level.

Our improvement plan sets out the actions required to deliver the ambitions within our strategy



Succeeding

This transformation plan is focused on delivery. If our children and young people are to succeed then we must continue to make improvements across the system. Our renewed governance arrangements and focus on delivery will help to ensure we are achieving our goals.

Tailoring

The actions outlined in this improvement plan reflect our ongoing commitment to recognise and support the diversity of individual needs and aspirations across Hertfordshire

Enabling

We are focused on supporting our workforce to continuously learn and improve and this is reflected in a range of new services and support. This will help to drive improvement in the workforce that will help to deliver better outcomes.

Supporting

We continue to develop our provision in Hertfordshire and this will continue to be a priority in the coming year and beyond, so we are well placed to meet needs appropriately.

Collaborating

This plan has been developed by colleagues from across Hertfordshire. Our strong relationships with Hertfordshire Parent Carer Involvement (HPCI) ensures the voice of families and taken into account and we are working to ensure that the voices of children and young people with SEND remains at the centre of all we do.

A Shared Mission: Aligning Strategic Ambitions, Priorities and outcomes

SEND Strategy Ambitions

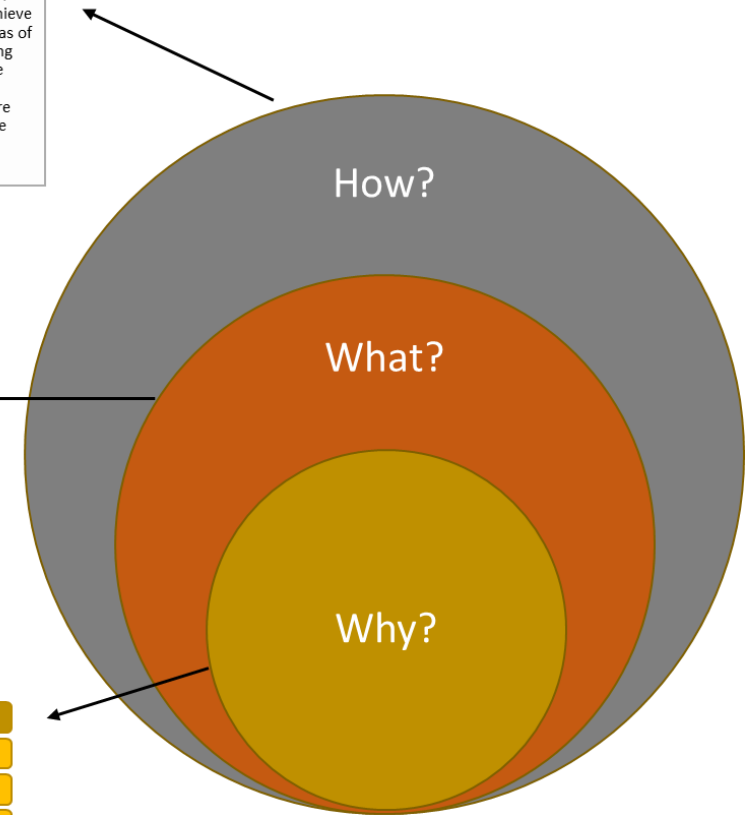
Tailoring	Enabling	Provision	Collaborating	Succeeding
<ul style="list-style-type: none"> Personalisation: Plan and deliver services that are flexible and respect individual wishes and meet individual needs 	<ul style="list-style-type: none"> Workforce (Network): Continue to develop a skilled, learning workforce that strives for excellence and staff are proud of their own achievements and celebrate those of others 	<ul style="list-style-type: none"> Supporting: providing sufficient and appropriate provision in Hertfordshire and within their community to meet CYP's wishes and meet individual needs 	<ul style="list-style-type: none"> Partnership: Working in partnership with other organisations to deliver the right services at the right time to prevent problems escalating 	<ul style="list-style-type: none"> Outcomes: Supporting all CYP with SEND to achieve success in all areas of life understanding the impact of the pandemic and working to ensure our young people achieve their potential

Parents & Carers Priorities

High levels of aspiration for CYP with additional needs including improving outcomes/attainment/progress	Getting the basics right to ensure CYP with SEND thrive – quality first teaching with an aspiration to meaningful inclusion, effective and timely SEN support, meeting statutory requirements on EHCPs
Better joint working across all agencies to ensure consistent and holistic support	Timely access to health professionals / services, and multi – agency support while waiting

Outcomes for SEND CYP

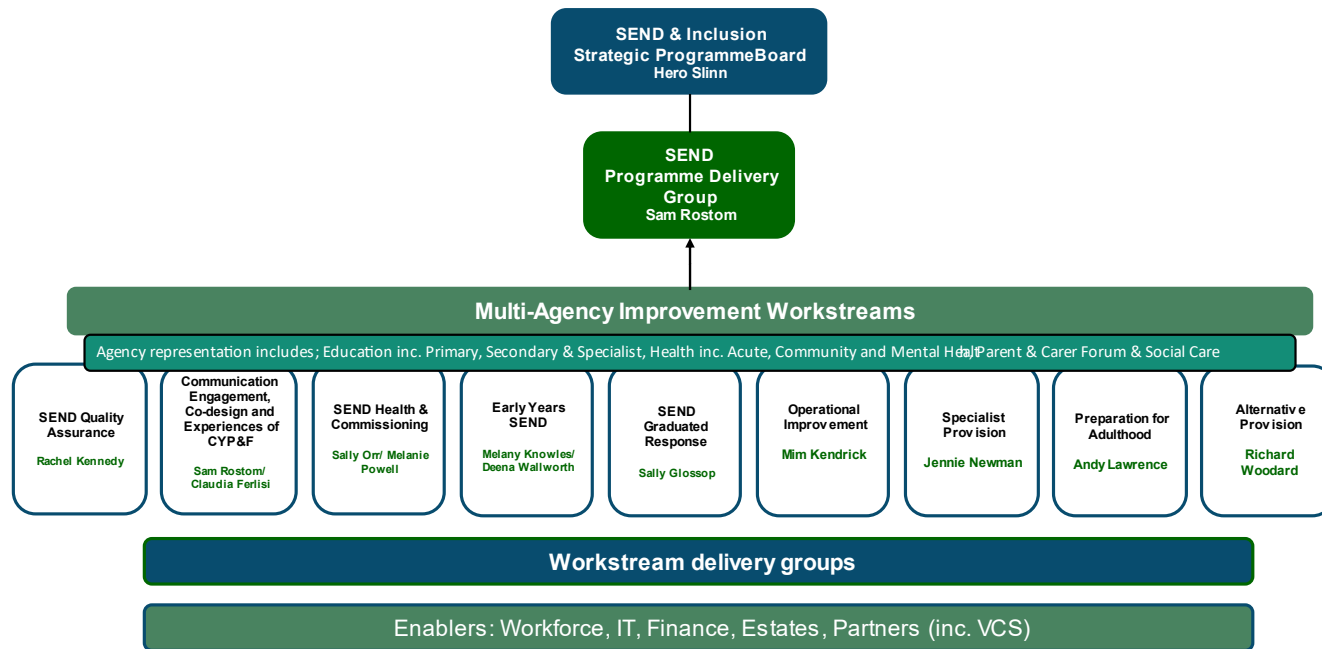
Hertfordshire Outcome Bees Framework
Be Happy
Be Healthy
Be Resilient
Be Safe
Be Ambitious
Be Independent
Be Included



Governance Arrangements

Robust governance mechanisms ensure the right level of focus, clarity and accountability is in place to drive improvements and deliver improved outcomes for families in Herts. Each workstream is led by a multi-agency group of leaders who oversee the plan in that area, reporting into the Programme Delivery Group to ensure there is effective management and oversight. The Programme Delivery Group report directly to the Strategic Programme Board which also has oversight of system-wide improvement and transformation work, ensuring that all improvement work across the partnership relating to SEND is effectively coordinated and interfaced.

SEND Improvement & Transformation Governance



Strategic direction

Setting the strategic direction, interface with other parts of the system, high support and challenge



Management & Oversight

Coordination of plan delivery, informing plan development, oversight and monitoring of progress against plan



Delivery and monitoring

Identifying actions, operational delivery and reporting on progress of workstream

Plan Development

Our improvement plan has been developed in an open, collaborative and outcome-focused way, working with our parent and carer forum HPCI and a range of system partners to ensure it contains the right actions to deliver the ambitions set out within the SEND Strategy 2022-2025.

